



# OUR IMPACT

Today, one in five families in New York City lives at or below the poverty level. As a result, they are at higher risk of chronic and infectious disease and poorer overall health compared with families with higher socioeconomic backgrounds. Public Health Solutions (PHS) executes a variety of health-oriented programs to help vulnerable families thrive and lead healthier lives.

## NURSE-FAMILY PARTNERSHIP®

PHS' Nurse-Family Partnership® (NFP) services empower first-time mothers to transform their lives and create better futures for themselves and their babies. At our NFP programs in Queens and Staten Island, trained nurses regularly visit young, first-time moms-to-be, starting early in the pregnancy and continuing through the child's second birthday.

Every dollar invested in NFP returns \$5.70 back into the economy. A two and a half year investment in a woman and her child's health has enormous positive outcomes.

**82%** INCREASE IN MATERNAL EMPLOYMENT

**67%** REDUCTION IN CHILDREN'S BEHAVIORAL AND INTELLECTUAL PROBLEMS

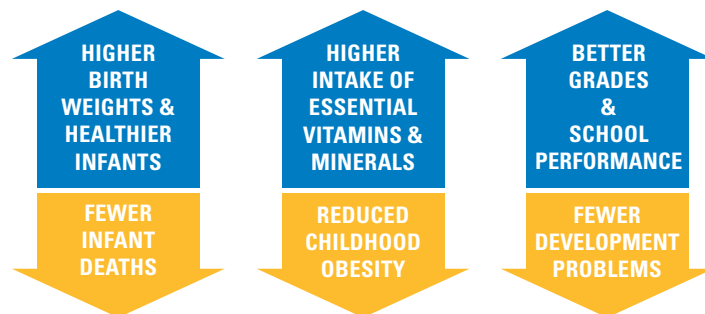
**56%** REDUCTION IN CHILD EMERGENCY ROOM VISITS FOR ACCIDENTS AND POISONING

**48%** REDUCTION IN ABUSE AND NEGLECT

## NEIGHBORHOOD WIC

Our Neighborhood WIC program is the largest community-based WIC program in New York State, serving over 35,000 women, infants, and children, and distributing \$43M in WIC checks to families a year. Every dollar spent on WIC participation returns \$1.77 to \$3.13 back to society. Four decades of research shows that WIC gives children a healthy start with long-term payoffs.

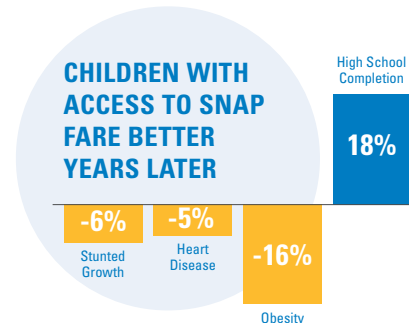
WIC FAMILIES HAVE:



## SNAP

The Supplemental Nutrition Assistance Program (SNAP) has been called the cornerstone of the nation's nutrition safety net because it is one of the most important programs in place to prevent hunger and food insecurity.

PHS' SNAP program puts food on the table for 20,000 individuals a year. In addition to being an economic and nutritional lifeline for New Yorkers, SNAP is considered by economists to be one of the most effective forms of economic stimulus. It's estimated that in a weak economy, every dollar increase in SNAP benefits generates about \$1.70 in economic activity.



Note: The study compared individuals who had access to SNAP (then food stamps) in early childhood after its introduction in the 1960s and early 1970s to similar children who did not (because they were born before its introduction) in each county.

Source: Hoynes, Schanzenbach, and Almond, "Long-Run Impacts of Childhood Access to the Safety Net," American Economic Review, April 2016.



## HEALTH INSURANCE

Health insurance, often in the form of Medicaid, helps many vulnerable families. PHS is a leading provider in health insurance enrollment. We help enroll over 22,000 individuals in health insurance every year.

HIGHER RATES OF HEALTH COVERAGE



MORE FAMILIES RECEIVE NEEDED MEDICAL CARE



EARLIER DETECTION AND TREATMENT OF DISEASES



LOWER LONG-TERM HEALTH CARE COSTS + FEWER SICK DAYS



GREATER PRODUCTIVITY AND BETTER WORKFORCE FOR EMPLOYERS



**COMPARED WITH UNINSURED COUNTERPARTS,** children with health insurance are more likely to complete high school and to attend and complete college.



**FOR HOSPITALS, UNCOMPENSATED CARE IS A LARGE FINANCIAL BURDEN THAT THEY NEED TO COVER.**

Not having health insurance costs taxpayers money as well, since New York State must use its own funds to cover some uncompensated care costs.

## FAMILY PLANNING CAPACITY BUILDING PROGRAM

New York has the second highest unintended pregnancy rate in the United States. Low-income women have unplanned pregnancy rates nearly seven times higher than that of higher-income women, and children of unintended pregnancies are more likely to suffer from poor health outcomes.

PHS works to ensure that underserved women are screened for pregnancy intention and have access to a full range of contraceptive methods. Our Family Planning Capacity Building pilot program demonstrated significant results.



**ANNUAL SCREENING FOR PREGNANCY INTENTION INCREASED FROM 3% TO 76%**



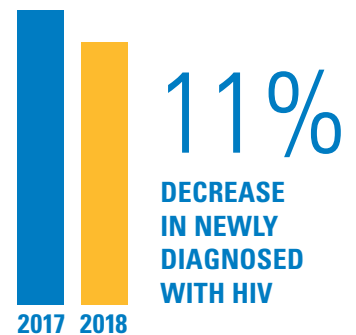
**PATIENTS NOT SEEKING PREGNANCY WHO INITIATED OR CONTINUED USE OF AN EFFECTIVE CONTRACEPTIVE METHOD INCREASED FROM 2% TO 68%**

**FROM 2016 TO 2019, OVER 20 ADDITIONAL SITES SAW COMPARABLE RESULTS AND PHS CONTINUES SUPPORTING MORE.**

**THIS PROGRAM BRINGS NY CLOSER TO CLOSING INEQUITABLE GAPS IN HEALTH CARE.**

## HIV/AIDS

PHS has a huge role in helping to prevent the spread of HIV and assuring that those living with HIV/AIDS are connected to high-quality care. In 2017, the NYC DOHMH announced that new HIV diagnoses rates have reached a historic low in New York City.



Sources include nursefamilypartnership.org, wicstrong.com, cbpp.org, nyc.gov